

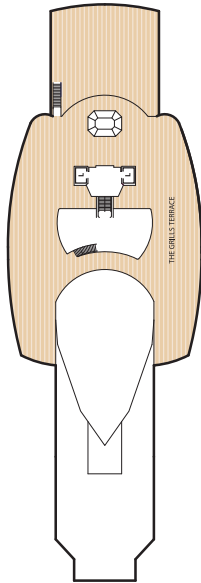
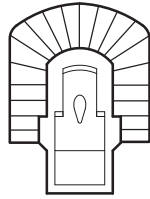


# QUEEN ELIZABETH DECK PLANS

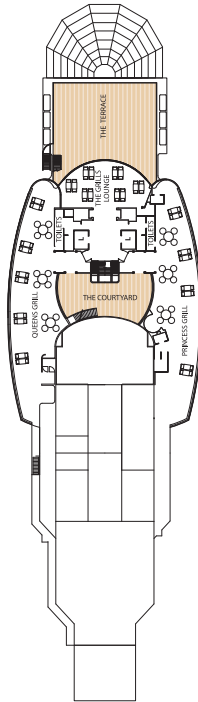
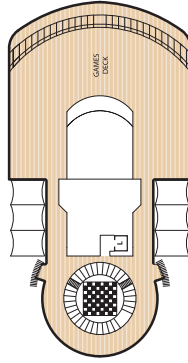
## Stateroom Category

<b>Grand Suites</b>		
Aft	High Decks 6,7	<b>Q1</b>
<b>Master Suites</b>		
Midships	High Deck 7	<b>Q2</b>
<b>Penthouse</b>		
Midships	High Decks 4,5,6,8	<b>Q3</b>
Midships	High Deck 7	<b>Q4</b>
<b>Queens Suites</b>		
Aft	High Decks 4,5,8	<b>Q5</b>
Forward/Aft	High Decks 4,5,7,8	<b>Q6</b>
<b>Princess Suites</b>		
Midships	High Decks 7,8	<b>P1</b>
Midships/Forward	High Decks 4,5,6	<b>P2</b>
<b>Club Balcony</b>		
Midships	High Decks 8	<b>AA</b>
<b>Balcony</b>		
Midships	High Decks 4,5,6,7,8	<b>BA</b>
Forward/Aft	High Decks 4,5,6,7,8	<b>BC</b>
<b>Balcony (partially obstructed view)*</b>		
Midships	High Deck 5	<b>CA</b>
<b>Oceanview</b>		
Midships	Low Deck 1	<b>EB</b>
Forward	High Deck 6	<b>ED</b>
Forward/Aft	Low Deck 1	<b>ED</b>
<b>Oceanview (obstructed view)*</b>		
Midships	High Deck 4	<b>FA</b>
<b>Deluxe Inside</b>		
Midships	High Deck 6,8	<b>GA</b>
Midships	Low Deck 1	<b>GB</b>
<b>Standard Inside</b>		
Midships	High Decks 7,8	<b>IA</b>
Forward/Aft	High Decks 4,5,6,7,8	<b>IC</b>

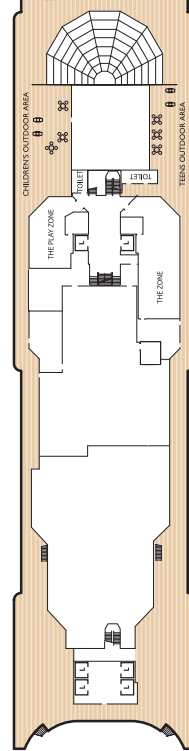
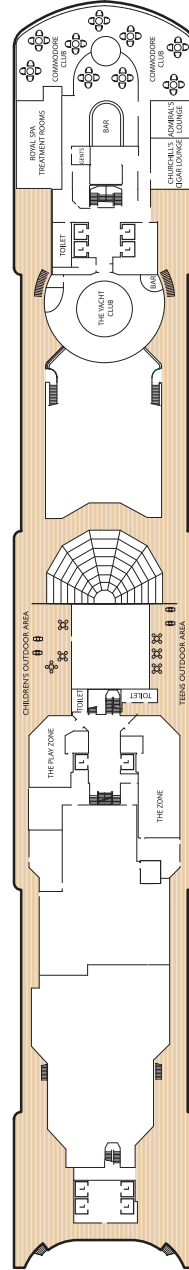
## Deck 12



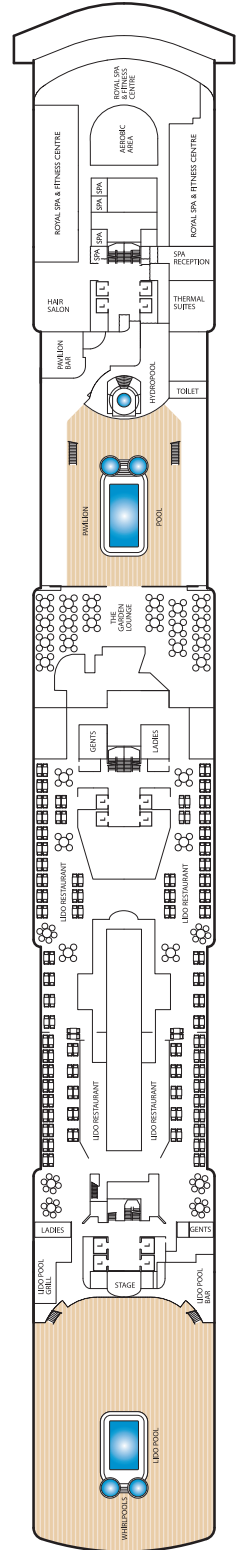
## Deck 11



## Deck 10



## Deck 9



Forward

Midships

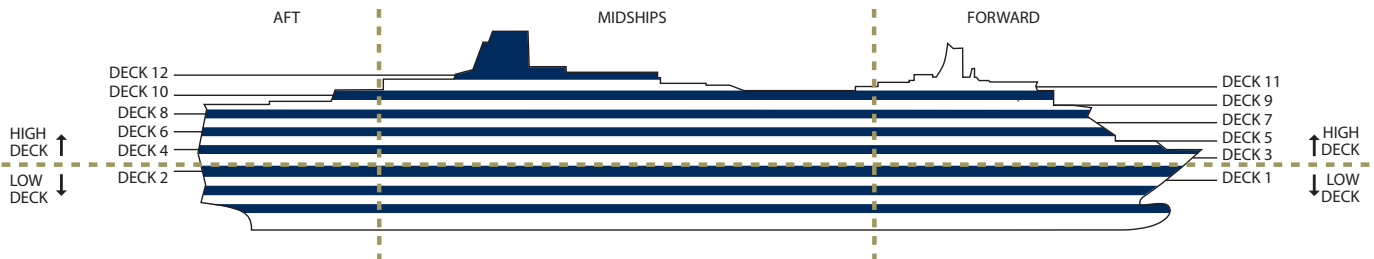
Aft

## Key to symbols

- L Lift
- † Indicates 2 lower berths and 1 upper berth
- + Indicates 3rd berth is a single sofa bed
- ‡ Indicates 3rd and 4th berth is a single sofa bed and one upper bed
- \* Staterooms have views obstructed by lifeboats
- ✕ Views partially obstructed by lifeboat mechanism
- ▲ Wheelchair accessible
- Staterooms 7.001 & 7.002 shaded by Bridge Wings
- ◆ Staterooms 6.001 & 6.002 have forward facing ocean views
- Staterooms 4.001-4.042, Deck 4 Forward, have metal fronted balconies

## Ship facts

Entered Service:	2010
Country of Registry:	Bermuda
Service Speed:	21.7 knots
Max Speed:	23.7 knots
Gross Tonnage:	90,900 GRT
Guest Capacity:	2,068
No. of Crew:	1,005
Length Overall:	294 metres
Width:	32.25 metres
Draft:	8 metres

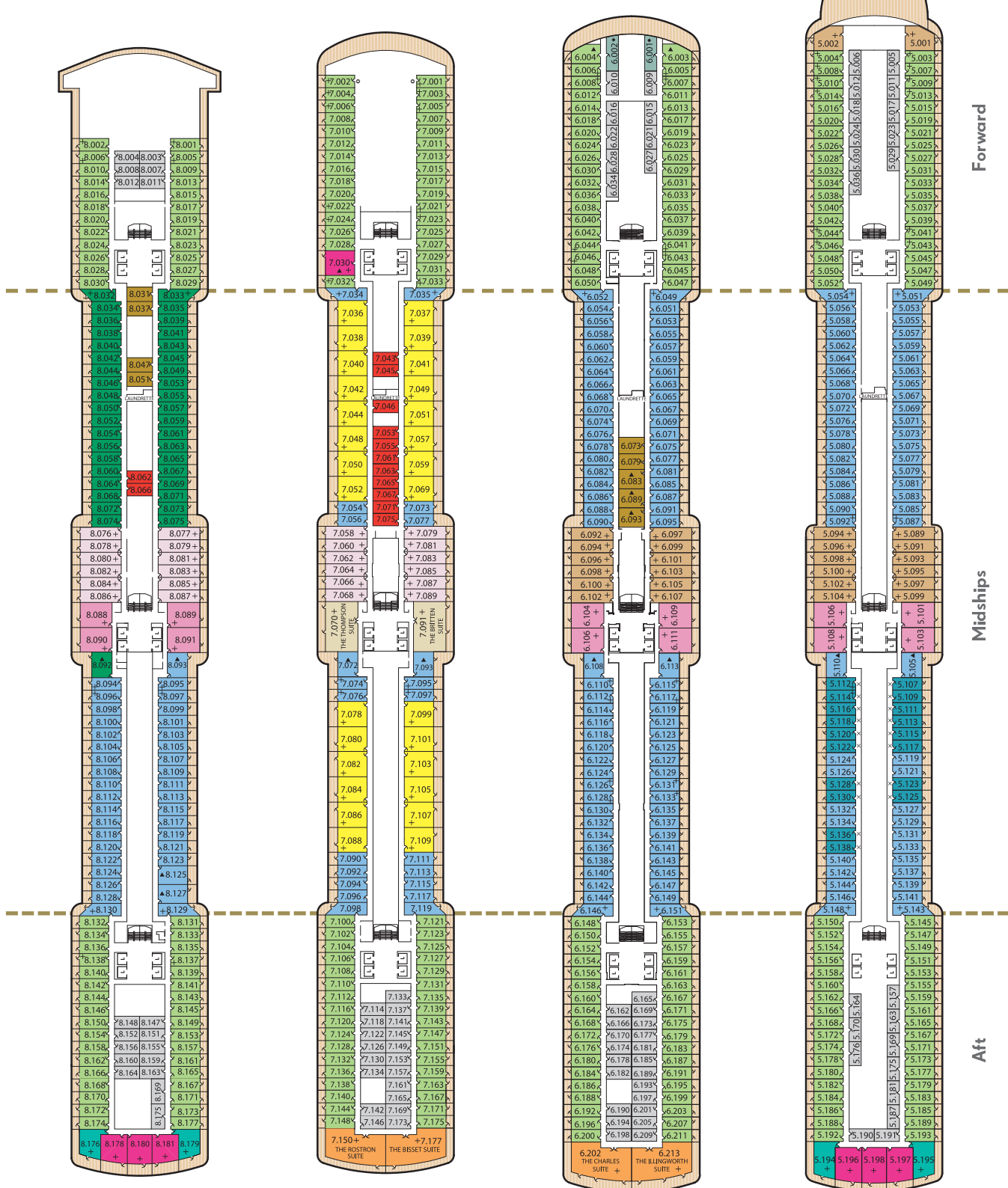


**Deck 8 (High)**  
(Penthouses, Queens & Princess Suites & Staterooms 8.001-8.181)

**Deck 7 (High)**  
(Grand, Master & Princess Suites, Penthouses & Staterooms 7.001-7.177)

**Deck 6 (High)**  
(Grand Suites, Penthouses, Princess Suites & Staterooms 6.001-6.213)

**Deck 5 (High)**  
(Penthouses, Queens & Princess Suites & Staterooms 5.001-5.198)



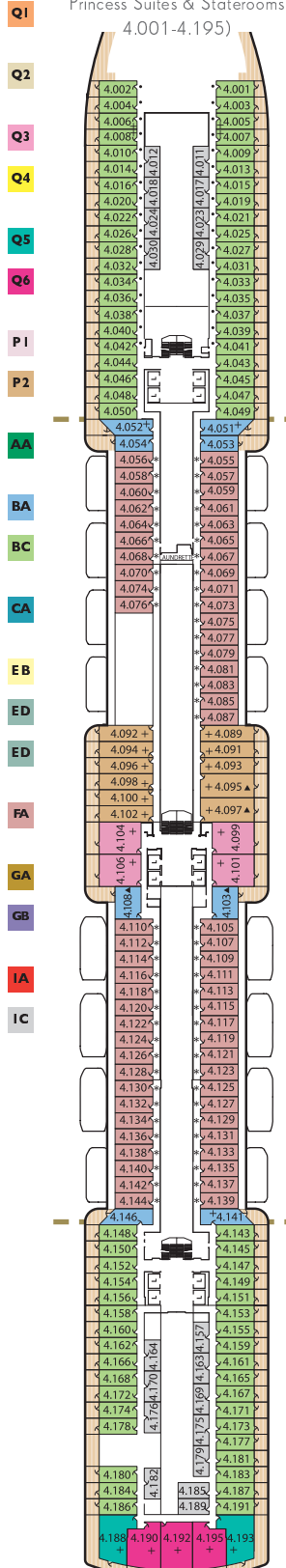


# QUEEN ELIZABETH DECK PLANS

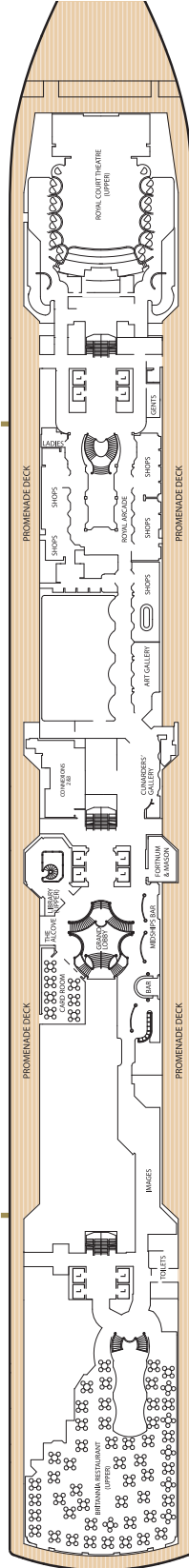
## Stateroom Category

<b>Grand Suites</b>	
Aft	High Decks 6,7
<b>Master Suites</b>	
Midships	High Deck 7
<b>Penthouse</b>	
Midships	High Decks 4,5,6,8
Midships	High Deck 7
<b>Queens Suites</b>	
Aft	High Decks 4,5,8
Forward/Aft	High Decks 4,5,7,8
<b>Princess Suites</b>	
Midships	High Decks 7,8
Midships/Forward	High Decks 4,5,6
<b>Club Balcony</b>	
Midships	High Decks 8
<b>Balcony</b>	
Midships	High Decks 4,5,6,7,8
Forward/Aft	High Decks 4,5,6,7,8
<b>Balcony (partially obstructed view)*</b>	
Midships	High Deck 5
<b>Oceanview</b>	
Midships	Low Deck 1
Forward	High Deck 6
Forward/Aft	Low Deck 1
<b>Oceanview (obstructed view)*</b>	
Midships	High Deck 4
<b>Deluxe Inside</b>	
Midships	High Deck 6,8
Midships	Low Deck 1
<b>Standard Inside</b>	
Midships	High Decks 7,8
Forward/Aft	High Decks 4,5,6,7,8

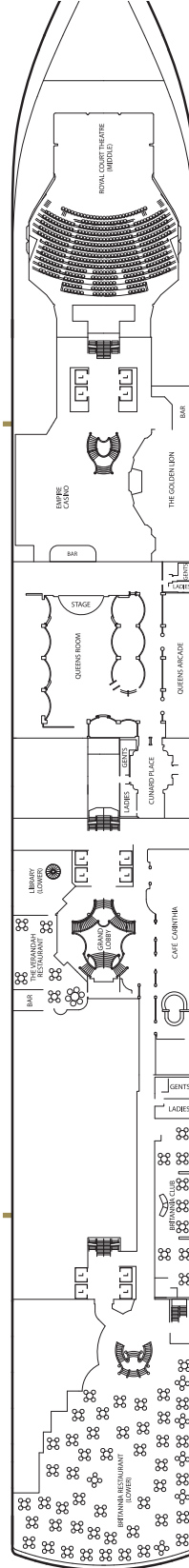
**Deck 4 (High)**  
(Penthouses, Queens & Princess Suites & Staterooms 4.001-4.195)



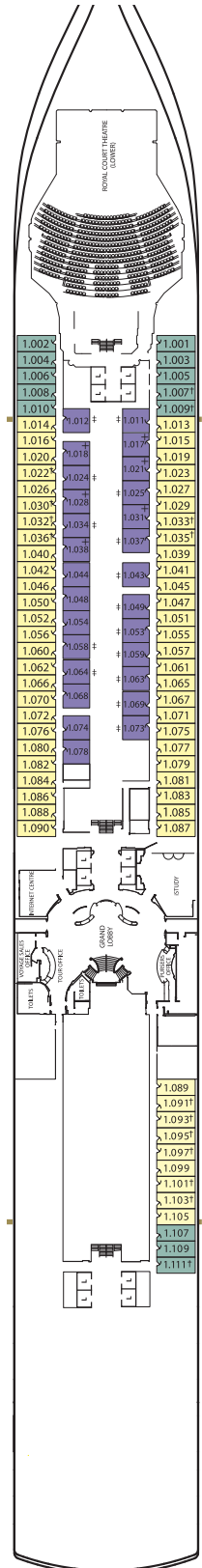
**Deck 3**



**Deck 2**



**Deck 1 (Low)**  
(Staterooms 1.001-1.111)



Forward

Midships

Aft

**Key to symbols**

- L Lift
- † Indicates 2 lower berths and 1 upper berth
- + Indicates 3rd berth is a single sofa bed
- ‡ Indicates 3rd and 4th berth is a single sofa bed and one upper bed
- \* Staterooms have views obstructed by lifeboats
- X Views partially obstructed by lifeboat mechanism
- ▲ Wheelchair accessible
- Staterooms 7.001 & 7.002 shaded by Bridge Wings
- ◆ Staterooms 6.001 & 6.002 have forward facing ocean views
- Staterooms 4.001-4.042, Deck 4 Forward, have metal fronted balconies